

The complete posting can also be found on
Lakeland's LiteBlue Web Page.

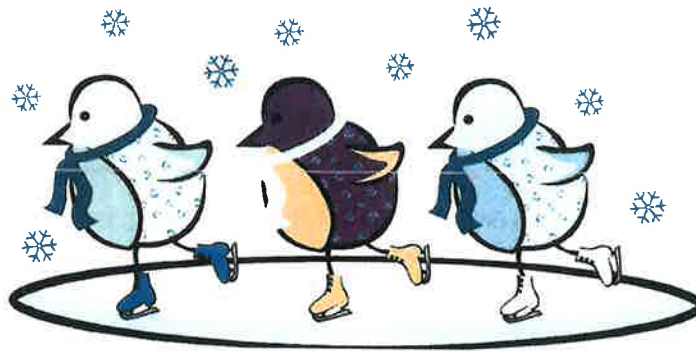
Please be aware that Internet Explorer is the only supported browser for eBidding.

UNITED STATES POSTAL SERVICE NOTICE OF VACANCY IN ASSIGNMENTS

Post on the bulletin board in your station or unit for the full time of posting as shown on the notice. Please remove at the expiration of the time limit, and retain at your office for 30 days, then destroy.

CLERK & MAIL HANDLER JANUARY 2019 POSTINGS

PHONE OR WEB BIDDING IS MANDATORY FOR ALL APWU & MHU CRAFT EMPLOYEES



ANY POSITION RESTRICTED TO "IN SECTION BIDDERS" ARE ALSO
OPEN TO ANY EMPLOYEE WITH RETREAT RIGHTS TO THAT SECTION

Phone or Web Bidding must be used to bid on the assignments(s) described below. (EXCEPT for Best Qualified positions, which have separate instructions) Form 1717A will no longer be accepted for bids.

Any additional correspondence regarding bids, such as letters of applications for Best Qualified positions, must be faxed (414-287-2258), mailed, or brought to HR Local Service, Main Post Office 2nd Floor, 345 W St. Paul Ave, Milwaukee WI 53201-5020, Attn: Shelley Rome-Strong.

Under no circumstances will applications be accepted after the date specified. Any employee desiring to cancel a bid for a posted vacancy must do so no later than the date of the closing of the posting as shown below.

ALL requests for new PIN numbers – follow the instructions on second page.

Allow sufficient time to get your new PIN number through the mail. Yellow (manual) bid cards will be accepted only if BOTH the web and phone bidding systems are not working properly on the LAST DAY of the posting.

CLERK POSTING NUMBER: 189688 MAIL HANDLER POSTING NUMBER: 189678

DATE AND TIME POSTED: January 2, 2019 DATE AND TIME TO BE WITHDRAWN: Midnight, January 11, 2019

R0206
BC568846 Milwaukee(WI) Bid Clu
GNNRMO

HUMAN CAPITAL ENTERPRISE SYSTEMS
VACANCY NOTICE

REQUESTED: 12/31/2018 09:28:55
Page: 1 of 5

THE UNITED STATES POSTAL SERVICE PROVIDES REASONABLE ACCOMMODATIONS TO QUALIFIED INDIVIDUALS WITH DISABILITIES. IF YOU NEED A REASONABLE ACCOMMODATION FOR ANY PART OF THE APPLICATION, BIDDING, INTERVIEW, AND/OR SELECTION PROCESS, PLEASE CONTACT THE OFFICE IDENTIFIED ON THE VACANCY ANNOUNCEMENT. THE DECISION ON GRANTING REASONABLE ACCOMMODATION WILL BE ON A CASE-BY-CASE BASIS.

For retirement purposes, NTFT assignments of less than 40 hours a week are considered part-time work

Posting No: 189688 Clerk Opening Date : 01/02/2019 Closing Date : 01/11/2019
JOB ID: 7211257Z 2320-0001 SALES AND SERVICES KP0013 P7 06 TOUR II LDC:45 EG:1=Full Time
ASSOCIATE

Bidding Newly 01016122 MAIN OFFICE OPERATIONS MILWAUKEE Clerks -
Established NonHQ

JOB SLOT COMMENTS: Created per Step 2 grievance settlement #70459-18

QUALIFICATIONS : 421 SALES AND SERVICES (V3.9)

SECTION:

WORK SCHEDULE: 0930-1830-60L-Sa-SuS

All schedules display 'service days' according to USPS policy.

Saturday			Sunday			Monday			Tuesday			Wednesday			Thursday			Friday		
From	To	Brk	From	To	Brk	From	To	Brk	From	To	Brk	From	To	Brk	From	To	Brk	From	To	Brk
OFF	OFF	OFF	OFF	OFF	OFF	09:30	18:30	060	09:30	18:30	060	09:30	18:30	060	09:30	18:30	060	09:30	18:30	060

POSTING COMMENTS :

VACATED BY : EMP ID: ON DATE:

JOB ID: 72109535 2320-0001 SALES AND SERVICES KP0013 P7 06 TOUR I LDC:45 EG:1=Full Time
ASSOCIATE

Bidding Newly 01016063 BAY VIEW STA OPRNS UNIT BAY VIEW Clerks -
Established SAINT NonHQ
FRANCIS

JOB SLOT COMMENTS: Created per step two grievance settlement #70383-18. Section: AMC

QUALIFICATIONS : 421 SALES AND SERVICES (V3.9)

SECTION:

WORK SCHEDULE: 0130-1030-60L-Su-MoS

All schedules display 'service days' according to USPS policy.

Saturday			Sunday			Monday			Tuesday			Wednesday			Thursday			Friday		
From	To	Brk	From	To	Brk	From	To	Brk	From	To	Brk	From	To	Brk	From	To	Brk	From	To	Brk
01:30	10:30	060	OFF	OFF	OFF	OFF	OFF	OFF	01:30	10:30	060	01:30	10:30	060	01:30	10:30	060	01:30	10:30	060

POSTING COMMENTS :

VACATED BY : EMP ID: ON DATE:

R0206
BC568846 Milwaukee(WI) Bid Clu
GNNRM0

HUMAN CAPITAL ENTERPRISE SYSTEMS
VACANCY NOTICE

REQUESTED: 12/31/2018 09:28:55
Page: 2 of 5

JOB ID: 72109539 2320-0001 SALES AND SERVICES KP0013 P7 06 TOUR II LDC:45 EG:1=Full Time
ASSOCIATE
Bidding Newly 00040755 BAY VIEW/ST FRANCIS CARRIER BAY VIEW Clerks -
Established OFF OFF OFF STATION SAINT NonHQ
FRANCIS

JOB SLOT COMMENTS: Created per step two grievance settlement #70383-18

QUALIFICATIONS : 421 SALES AND SERVICES (V3.9)

SECTION:

WORK SCHEDULE: 0900-1800-60L-Su-FrS

All schedules display 'service days' according to USPS policy.

Saturday			Sunday			Monday			Tuesday			Wednesday			Thursday			Friday		
From	To	Brk	From	To	Brk	From	To	Brk	From	To	Brk	From	To	Brk	From	To	Brk	From	To	Brk
09:00	18:00	060	OFF	OFF	OFF	09:00	18:00	060	09:00	18:00	060	09:00	18:00	060	09:00	18:00	060	OFF	OFF	OFF

POSTING COMMENTS :

VACATED BY : EMP ID: ON DATE:

JOB ID: 72112582 2320-0001 SALES AND SERVICES KP0013 P7 06 TOUR II LDC:45 EG:1=Full Time
ASSOCIATE
Bidding Newly 01016063 BAY VIEW STA OPRNS UNIT BAY VIEW Clerks -
Established OFF OFF OFF SAINT NonHQ
FRANCIS

JOB SLOT COMMENTS: Created per Step 2 grievance #70459-18

QUALIFICATIONS : 421 SALES AND SERVICES (V3.9)

SECTION:

WORK SCHEDULE: 1130-2030-60L-Su-FrS

All schedules display 'service days' according to USPS policy.

Saturday			Sunday			Monday			Tuesday			Wednesday			Thursday			Friday		
From	To	Brk	From	To	Brk	From	To	Brk	From	To	Brk	From	To	Brk	From	To	Brk	From	To	Brk
11:30	20:30	060	OFF	OFF	OFF	11:30	20:30	060	11:30	20:30	060	11:30	20:30	060	11:30	20:30	060	OFF	OFF	OFF

POSTING COMMENTS :

VACATED BY : EMP ID: ON DATE:

JOB ID: 72115508 2320-0009 LEAD SALES & SERVICES KP0013 P7 07 TOUR I LDC:45 EG:1=Full Time
ASSOCIATE
Bidding Newly 01016063 BAY VIEW STA OPRNS UNIT BAY VIEW Clerks -
Established OFF OFF OFF SAINT NonHQ
FRANCIS

JOB SLOT COMMENTS: Minimum 1 year experience in window. AMC location.

QUALIFICATIONS : 421 SALES AND SERVICES (V3.9)

SECTION:

WORK SCHEDULE: 0130-1030-60L-Sa-SuS

All schedules display 'service days' according to USPS policy.

Saturday			Sunday			Monday			Tuesday			Wednesday			Thursday			Friday		
From	To	Brk	From	To	Brk	From	To	Brk	From	To	Brk	From	To	Brk	From	To	Brk	From	To	Brk
OFF	OFF	OFF	OFF	OFF	OFF	01:30	10:30	060	01:30	10:30	060	01:30	10:30	060	01:30	10:30	060	01:30	10:30	060

POSTING COMMENTS :

VACATED BY : EMP ID: ON DATE:

R0206
BC568846 Milwaukee(WI) Bid Clu
GNNRMO

HUMAN CAPITAL ENTERPRISE SYSTEMS
VACANCY NOTICE

REQUESTED: 12/31/2018 09:28:55
Page: 3 of 5

JOB ID: ~~70310686~~ 2320-0001 SALES AND SERVICES KP0013 P7 06 TOUR II LDC:45 EG:1=Full Time
ASSOCIATE
Bidding Vacant 01016063 BAY VIEW STA OPRNS UNIT BAY VIEW SAINT FRANCIS Clerks - NonHQ

JOB SLOT COMMENTS: SAT 0830-1730-60L SUN 0945-1845-60L Mon-WED 0730-1600-30L
SDO THU/FRI#

QUALIFICATIONS : 421 SALES AND SERVICES (V3.9)

SECTION: AMC T2

WORK SCHEDULE: 0830/0945-60L-Th-FrV

All schedules display 'service days' according to USPS policy.

Saturday	Sunday	Monday	Tuesday	Wednesday	Thursday	Friday
----------	--------	--------	---------	-----------	----------	--------

From To Brk	From To Brk	From To Brk	From To Brk	From To Brk	From To Brk	From To Brk
08:30 17:30 060	09:45 18:45 060	07:30 16:00 030	07:30 16:00 030	07:30 16:00 030	OFF OFF OFF	OFF OFF OFF

POSTING COMMENTS :

VACATED BY : Jean Flynn EMP ID: 1403 ON DATE: 12/07/2018

JOB ID: ~~70818090~~ 2320-0001 SALES AND SERVICES KP0013 P7 06 TOUR II LDC:45 EG:1=Full Time
ASSOCIATE
Bidding Vacant 01016426 HILLTOP STA OPRNS UNIT HILLTOP Clerks - NonHQ

JOB SLOT COMMENTS: Hilltop Pool/Relief with a variable schedule - Mon at Harbor Retail,
Tues/Thur at Hilltop PO, Wed at Mid-City PO, Friday at Juneau PO. MON-FRI
08:30-1730-60L SDO SAT/SUN

QUALIFICATIONS : 421 SALES AND SERVICES (V3.9)

SECTION: HILLTOP

WORK SCHEDULE: 0830-1730-60L-Sa-SuS

All schedules display 'service days' according to USPS policy.

Saturday	Sunday	Monday	Tuesday	Wednesday	Thursday	Friday
----------	--------	--------	---------	-----------	----------	--------

From To Brk	From To Brk	From To Brk	From To Brk	From To Brk	From To Brk	From To Brk
OFF OFF OFF	OFF OFF OFF	08:30 17:30 060	08:30 17:30 060	08:30 17:30 060	08:30 17:30 060	08:30 17:30 060

POSTING COMMENTS :

VACATED BY : Rick Inman EMP ID: 1341 ON DATE: 11/28/2018

JOB ID: ~~70702703~~ 2315-7153 LEAD MAIL PROCESSING KP0013 P7 07 TOUR III LDC:11 EG:1=Full Time
CLERK
Bidding Vacant 01018791 AUTO CENTRAL TOUR III MILWAUKEE Clerks - NonHQ

JOB SLOT COMMENTS: AUTO-T3-WU 391; 1 year of Mail Processing Experience Required:
Principal Assignment Area Automation

QUALIFICATIONS :

SECTION: OCR/BCS/DBCS/LMLM T3

WORK SCHEDULE: 1400-2230-30L-Mo-TuS

All schedules display 'service days' according to USPS policy.

Saturday	Sunday	Monday	Tuesday	Wednesday	Thursday	Friday
----------	--------	--------	---------	-----------	----------	--------

From To Brk	From To Brk	From To Brk	From To Brk	From To Brk	From To Brk	From To Brk
14:00 22:30 030	14:00 22:30 030	OFF OFF OFF	OFF OFF OFF	OFF OFF OFF	14:00 22:30 030	14:00 22:30 030

POSTING COMMENTS :

VACATED BY : TWYLA SHEFFA EMP ID: 379 ON DATE: 11/23/2018

R0206
BC568846 Milwaukee(WI) Bid Clu
GNNRMO

HUMAN CAPITAL ENTERPRISE SYSTEMS
VACANCY NOTICE

REQUESTED: 12/31/2018 09:28:55
Page: 4 of 5

JOB ID: ~~95630191~~ 2345-32XX MAILING REQUIREMENTS CLK KP0017 P7 07 LDC:79 EG:1=Full Time
Bidding Vacant 01019074 BUSINESS MAIL ACCEPTANCE LAKELAND
UNIT DISTRICT Clerks -
NonHQ

JOB SLOT COMMENTS: NEW POSITION
REPLACES 8465028 ON 03CL02
CMS Job Slot ID: 8652707

QUALIFICATIONS : 425 BUSINESS MAIL ENTRY PREREQ (V1.2)
427 BUSINESS MAIL ACADEMY EXAM
718 BASIC COMPUTER SKILLS

SECTION:

WORK SCHEDULE: 0800-1630-30L-Sa-SuS

All schedules display 'service days' according to USPS policy.

Saturday			Sunday			Monday			Tuesday			Wednesday			Thursday			Friday		
From	To	Brk	From	To	Brk	From	To	Brk	From	To	Brk	From	To	Brk	From	To	Brk	From	To	Brk
OFF	OFF	OFF	OFF	OFF	OFF	08:00	16:30	030	08:00	16:30	030	08:00	16:30	030	08:00	16:30	030	08:00	16:30	030

POSTING COMMENTS :

VACATED BY : Sharon Sedlmeier EMP ID: 1411 ON DATE: 10/31/2018

JOB ID: ~~95835976~~ 2345-32XX MAILING REQUIREMENTS CLK KP0017 P7 07 LDC:79 EG:1=Full Time
Bidding Vacant 01019074 BUSINESS MAIL ACCEPTANCE LAKELAND
UNIT DISTRICT Clerks -
NonHQ

JOB SLOT COMMENTS:

QUALIFICATIONS : VALID STATE DRIVER'S LICENSE
PASSENGER CAR
425 BUSINESS MAIL ENTRY PREREQ (V1.2)
427 BUSINESS MAIL ACADEMY EXAM
718 BASIC COMPUTER SKILLS

SECTION:

WORK SCHEDULE: 0800-1630-30L-Sa-SuS

All schedules display 'service days' according to USPS policy.

Saturday			Sunday			Monday			Tuesday			Wednesday			Thursday			Friday		
From	To	Brk	From	To	Brk	From	To	Brk	From	To	Brk	From	To	Brk	From	To	Brk	From	To	Brk
OFF	OFF	OFF	OFF	OFF	OFF	08:00	16:30	030	08:00	16:30	030	08:00	16:30	030	08:00	16:30	030	08:00	16:30	030

POSTING COMMENTS :

VACATED BY : Susan Wagner EMP ID: 2738 ON DATE: 11/01/2018

R0206
BC568846 Milwaukee(WI) Bid Clu
GNNRMO

HUMAN CAPITAL ENTERPRISE SYSTEMS
VACANCY NOTICE

REQUESTED: 12/31/2018 09:28:55
Page: 5 of 5

JOB ID: ~~95594404~~ 2320-28XX BULK MAIL TECH KP0015 P7 07 LDC:79 EG:1=Full Time
Bidding Vacant 01019073 BUSINESS MAIL ACCEPTANCE LAKELAND
UNIT DISTRICT Clerks -
NonHQ

JOB SLOT COMMENTS: NEW POSITION-CORRECTED COMMENTS-05CL03. MUST BE CERT TO OPER
APPROPRIATE GOV'T VEHICLES, OR PROVIDE DRIVERS LICENSE # TO
LOCAL SERVICES. SEE JOB DESCRIP & QUALS FOR MORE INFORMATION
CMS Job Slot ID: 8465003

QUALIFICATIONS : VALID STATE DRIVER'S LICENSE
PASSENGER CAR
425 BUSINESS MAIL ENTRY PREREQ (V1.2)
427 BUSINESS MAIL ACADEMY EXAM

SECTION: BMEU T2

WORK SCHEDULE: 0845-1715-30L-Sa-SuS

All schedules display 'service days' according to USPS policy.

Saturday	Sunday	Monday	Tuesday	Wednesday	Thursday	Friday
From To Brk From To Brk From To Brk From To Brk From To Brk From To Brk	From To Brk From To Brk From To Brk From To Brk From To Brk	From To Brk From To Brk From To Brk From To Brk From To Brk	From To Brk From To Brk From To Brk From To Brk From To Brk	From To Brk From To Brk From To Brk From To Brk From To Brk	From To Brk From To Brk From To Brk From To Brk From To Brk	From To Brk From To Brk From To Brk From To Brk From To Brk
OFF OFF OFF OFF OFF OFF	OFF OFF OFF OFF OFF OFF	08:45 17:15 030	08:45 17:15 030	08:45 17:15 030	08:45 17:15 030	08:45 17:15 030

POSTING COMMENTS :

VACATED BY : Sandra Pfeiffer EMP ID: 3518 ON DATE: 10/12/2018

JOB ID: ~~Z0767026~~ 2320-0003 SALES,SVCS/DISTRIBUTION KP0013 P7 06 TOUR II LDC:45 EG:1=Full Time
ASSOC
Bidding Vacant 01015570 WEST ALLIS BRANCH OPRNS WEST ALLIS
UNIT Clerks -
NonHQ

JOB SLOT COMMENTS: WILL WORK POSTED SCHEDULE UNLESS NOTIFIED IN WRITING BY WEDNESDAY PRIOR
TO CHANGE. NO OUT OF SCHEDULE OR OT PAID
W/S: SAT 0530-1430(60) M/W/TH/FR 715-1615(60); NS days Su/Tu

QUALIFICATIONS : 421 SALES AND SERVICES (V3.9)
Z-14

SECTION: WEST ALLIS

WORK SCHEDULE: 0530/1430-60L-Su-TuV

All schedules display 'service days' according to USPS policy.

Saturday	Sunday	Monday	Tuesday	Wednesday	Thursday	Friday
From To Brk From To Brk From To Brk From To Brk From To Brk From To Brk	From To Brk From To Brk From To Brk From To Brk From To Brk	From To Brk From To Brk From To Brk From To Brk From To Brk	From To Brk From To Brk From To Brk From To Brk From To Brk	From To Brk From To Brk From To Brk From To Brk From To Brk	From To Brk From To Brk From To Brk From To Brk From To Brk	From To Brk From To Brk From To Brk From To Brk From To Brk
05:30 14:30 060	OFF OFF OFF	07:15 16:15 060	OFF OFF OFF	07:15 16:15 060	07:15 16:15 060	07:15 16:15 060

POSTING COMMENTS :

TOTAL SCHEME DEFERMENT DAYS:038

VACATED BY : Thomas Moczynski EMP ID: 672 ON DATE: 12/07/2018
